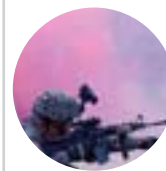




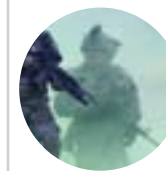
Viewer/ADM
Get the support you need from the EMS NG and TMDE helpdesks, and keep your legacy EMS-2 IETMs running optimally by using the latest policy.



EMS NG Publishing
Learn how to most quickly receive EMS support and what to do with your old EMS NG Viewer and ADM discs.



FAQs
Learn how to most quickly receive EMS support, and what to do with your old EMS NG Viewer and ADM discs.



Software Compatibility
Reference the EMS NG operating system matrix to ensure optimal product performance, and learn the proper way to view your legacy EMS-2 IETMs.

THE EMS INSIDER

May 2013

TECH SUPPORT

www.EMS-Helpdesk.com

Support@EMS-helpdesk.com

877-4651289

Hours: 8am - 6pm

ABOUT THIS NEWSLETTER

This monthly e-newsletter broadcasts current and future functionalities of the proven, state-of-the-art EMS software suite for our diverse customer base from the content developer to the soldier maintainer.

UPCOMING EVENTS



CCB
EMS Configuration Control
Board
JUNE 10



OTHER UPCOMING EVENT
Description of other upcoming event
JUNE 23

Viewer: Fix for Error Caused by Java Update

After a mandatory update to Java Runtime Environment (JRE), some users have had trouble launching the EMS Viewer.

If JBoss is not running, the EMS NG Viewer will not launch and this message will display.

Follow these steps to point the Viewer to the correct Java program. (Note: administrator privileges are required to perform these steps.)
... [Continue reading](#)



Cavalry Scouts from 2nd Squadron, 11th Armored Cavalry Regiment-Blackhorse, conduct escape and evasion lane training at Ft. Irwin, Calif. May 16 (courtesy of U.S. Army Flickr Photo Stream).

Top Articles

EMS NG VIEWER

Fix for Error Caused by Java Software Update

TMDE AND EMS CONNECT
When an issue develops on an MSD, users would at times not know whom to contact to resolve their issue...[Continue](#)

EMS-2 IETM AND MSD COMPATIBILITY
All field units who require EMS-2 IETMs to operate or ... [Continue](#)

RPSTL-REVISION SUMMARY LINKING
Content creators working on IETM revisions have found they cannot link from the revision summary to the changed RPSTL
[Continue](#)

RPSTL Editor
The EMS NG RPSTL Editor enables the content developer to “Export 2361C File by figure” to output a single [Continue](#)

IETM HELP MENU
Most users are familiar with the Viewer’s help menu: It is the place to go for help using the Viewer’s many [Continue](#)